



22^{TO} 24
NOVEMBER
LYON
DOUBLE MIXTE

7th European Conference on Substation Equipment

EXHIBITOR TECHNICAL GUIDE

Double Mixte

Organized by:



Société de l'Electricité, de l'Electronique et des technologies de
l'information et de la communication

Your contact at SEE:

Imène AHMED

SEE – 17 rue de l'Amiral Hamelin
75116 Paris Cedex 16

imene.ahmed@see.asso.fr

CONTENTS

Practical information	Page 3
Access map.....	Page 4
Deliveries	Page 5
Stand description	Page 6
Technical services	Page 7
Identification form*	Page 8
Sign form	Page 9
General order form	Page 10

***Forms must be attached to the Identification form and returned completed and signed before November 8th 2023 to the double mixte : [service-exposants@doublemixte .com](mailto:service-exposants@doublemixte.com)**

Any order received after this date will incur a 20% surcharge. After this closing date the organizers reserve the right to refuse the order.

PRACTICAL INFORMATION

Name of the Event: 7th European Conference on Substation Equipment

Date: November 22nd – 24th 2023

Location: Double Mixte
19 Av. Gaston Berger
69100 Lyon-Villeurbanne

Exhibition openings hours

Dates:	November 21	November 22	November 23	November 24
Opening hours:		8h00 - 18h30	8h00 - 17h00	
Set up / Dismantling:	8h00 - 12h00		17h30 - 20h00	
Gala dinner:		Boat cruise 19h - 23h		

Details on www.2023.matpost.org

Exhibitor badge

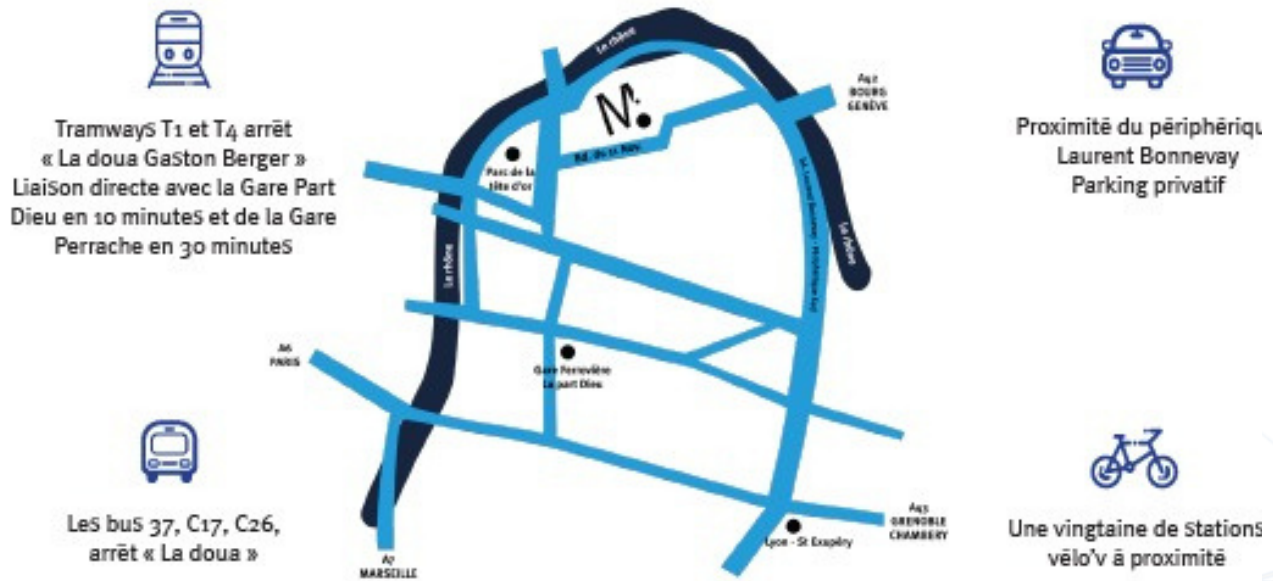
All booths include one free conference registration (including gala dinner). In order to prepare the badge of that person please send the information below to Imène AHMED imene.ahmed@see.asso.fr

- Lastname :
- Firstname :
- Company (how it should appear on the badge) :
- Country :
- Email :

Extra gala dinner ticket & technical visits

If you wish to purchase an extra gala dinner ticket (95€) or attend a technical visit please contact Imène AHMED.

ACCESS MAP



How to get there

BY ROAD

Tramway T1 and T4 towards IUT Feysine: Gaston Berger stop (Tram T1 serves the 2 SNCF stations Lyon Part-Dieu and Lyon Perrache with TGV arrivals),
Bus C17: Direction " Porte des Alpes ", Stop " CNRS ",
Bus C26 : Direction " Grand Clément ", Stop " La Doua ".

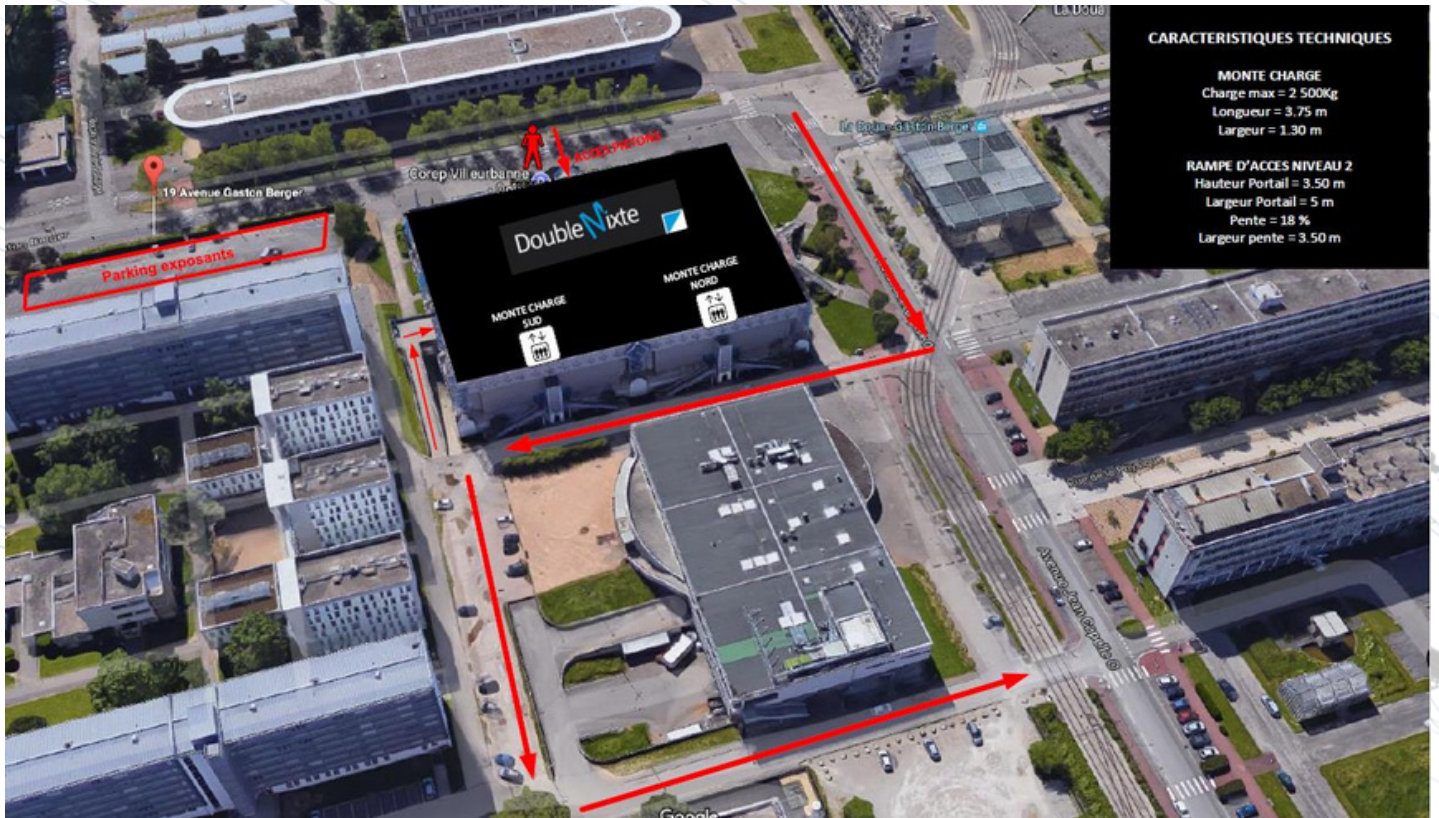
BY TRAIN

Lyon Part-Dieu (preferably) or Lyon Perrache
15 Minutes from rail station
Part Dieu Lyon - Paris: 2 h
Lyon - Genève: 1 h 45
Lyon - Marseille: 1 h 35

BY PLANE

Double Mixte is located at 25 Minutes from International airport Lyon Saint-Exupéry

Go to the back of the building to the delivery dock.
The south freight elevator for loading and unloading.



DELIVERIES

DELIVERY ON YOUR BOOTH

Delivery is performed under the exhibitor's responsibility; under no circumstances may Double Mixte accept liability.

Delivery is only possible on November 21st

EXHIBITORS ADDRESS OF DELIVERY

**Double Mixte, 19 avenue Gaston
Berger, 69100 Lyon-Villeurbanne**

IDENTIFICATION OF ALL PACKAGES DELIVERED AND SHIPPED

The following must also be shown on your packages :

MATPOST 2023

**Exhibitor company's name
booth N°**

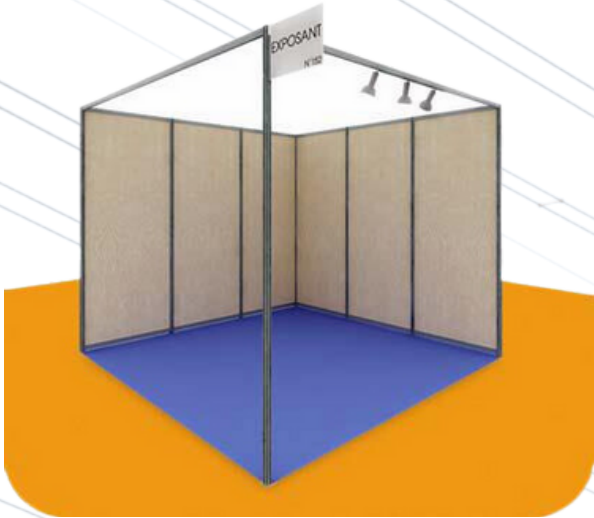
**Contact name
Telephone n°**

Packages **MUST** be identified otherwise it will be refused

ANY DELIVERY RECEIVED BEFORE NOVEMBER 21st WILL BE

REFUSED

STAND DESCRIPTION



Booth includes

- Stand with melamine partition
- Carpet on the floor
- Flag sign
- 1 free registration including gala dinner

No adapter included. Double Mixte do not provide any type of adapter.

It is forbidden to screw in the partitions. Only simple adhesives are authorized and will have to be completely removed of the partitions at the end of the exhibition.

No furniture included.

Furniture order form is available on page 11

All orders must be returned to
service-exposants@doublemixte.com

No later than November 8th, 2023

TECHNICAL SERVICES

ALL ORDERS MUST BE ACCOMPANIED BY PAYMENT INCLUDING VAT, WITHOUT WHICH THEY CANNOT BE ACCEPTED.

ANY ORDER RECEIVED AFTER NOVEMBER 8th, 2023, WILL INCUR A 20% SURCHARGE. AFTER THE CLOSING DATE, THE ORGANISERS HAVE THE RIGHT TO REFUSE THE ORDER.

CANCELLATIONS WILL NOT BE ACCEPTED AFTER THE FIRST DAY OF SET UP. NO REFUND WILL BE MADE.

FOR ANY REASON, DOUBLE MIXTE WILL NOT TAKE INTO ACCOUNT ANY COMPLAINT AFTER THE END OF THE CONFERENCE.

ANY SERVICE ORDERED DURING THE CONFERENCE WILL BE CHARGED 20% EXTRA COST.

IDENTIFICATION FORM

(to be returned to DOUBLE MIXTE
with order form)

Your contact:

Event:

Name :

7th European Conference on Substation Equipment

Email :

From: November 22nd

To: November 24th

**Email your orders to : service-exposants@doublemixte.com
Before November 8th 2023**

Services ordered after the closing date while on site will incur a 20% surcharge and must be paid with order.

Your company:

Contact name:

Booth number:

Invoicing address

Company:

Address:

Zip code:

City:

Country:

Intra-community VAT number (if applied):

Date:

Signature & Company Stamp

SIGN FORM

Flag sign is included in the rental price of your booth.
Name for your sign, maximum 20 characters :



EXHIBITOR NAME

PLEASE RETURN THIS FORM (MANDATORY) TO DOUBLE MIXTE
TOGETHER WITH THE IDENTIFICATION FORM PAGE 9

Date:

Signature & Company Stamp

GENERAL ORDER FORM

Désignation (Designation)	prix unitaire (Unit price)	Quantité (Qty)	prix total HT (Final price excl.VAT)
MOBILIER (Furniture)			
Pack (3 Fauteuils Julia noir + 1 Table basse Terra + 1 Présentoir) <i>Pack (3 black armchairs + 1 black coffee table + 1 black stand)</i>	445.00 €		
Fauteuil Julia Noire <i>(Black armchair)</i>	85.00 €		
Table basse Terra <i>(Coffee table black)</i>	75.00 €		
Présentoir Noir <i>(Black stand)</i>	130.00 €		
Tabouret Z Noir <i>(Black bar stool, chrome/black)</i>	55.00 €		
Mange-debout Egor noir <i>(Black high bar)</i>	130.00 €		
Banque hôtesse noire avec portes <i>(Black counter with doors)</i>	140.00 €		
Banque hôtesse noire sans portes <i>(Black counter without door)</i>	125.00 €		
APPAREIL ELECTRIQUE (Electrical device)			
Réfrigérateur 110L <i>(Refrigerator 140L)</i>	140.00 €		
LUMIERE ET PRISES DE COURANT (Light and plugs)			
Coffret électrique 3KW <i>(Electrical box 3KW)</i>	230.00 €		
Coffret électrique 4KW <i>(Electrical box 4KW)</i>	240.00 €		
Multiprise <i>(multiple socket)</i>	65.00 €		
ECRAN LCD (LCD screen)			
Moniteur écran LCD/LED 16/9ème 32"/81 cm <i>(Monitor LCD/LED 16/9ème 32"/81 cm)</i>	230.00 €		
Moniteur écran LCD/LED 55"/127 cm + Pied totem <i>(Monitor LCD/LED 16/9ème 50"/127 cm)</i>	610.00 €		
		TOTAL HT	<i>(excl. VAT)</i>
		TVA 20 %	<i>(VAT)</i>
		TOTAL TTC	<i>(incl.VAT)</i>

The material is supplied for the duration of the exhibition, including installation and removal, and remains under the responsibility of the client.

It is delivered the day before the opening of the exhibition. Any damage will be invoiced to the exhibitor.

PLEASE RETURN THIS FORM TOGETHER WITH THE IDENTIFICATION FORM PAGE 9

Date:

Signature & Company Stamp

COMPUTER AND VIDEO EQUIPMENT

LCD display rental



42-inch LED display

Inputs : HDMI, DVI, SDI

Price excl. tax per day: 150 €

48-inch LED display

Inputs : HDMI, USB

Price excl. tax per day: 250 €

55-inch LED display

Inputs: HDMI, DVI, USB, DP PORT, SD CARD

Price excl. tax per day: 336 €

65- inch LED display

Inputs : RJ45, DVI, USB

Price excl. tax per day: 490 €

86-inch LED display

Price excl. tax per day: 1 140 €



42 to 65 inch LED display stand

Price excl. tax per day: 70 €

80 to 86 inch display stand

Price excl. tax per day: 90 €

LCD screen rental



19-inch LCD display

Price excl. tax per day: 50 €

TECHNICAL SERVICES

Electricity



3 Kw single-phase enclosure

(10A - 4 plugs PC16)

Price excl. tax per day : 261,23 €

3 Kw single-phase enclosure

(32A - 4 plugs PC16)

Price excl. tax per day: 283,67 €

All our electrical panels are equipped with a 30 mA differential system

FURNITURE

Collection «Basic»



Chaise black

Price excl. tax per day: 2,36 €

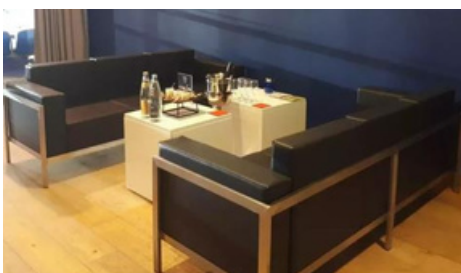


Table Bistrot

Sizes : 60 cm x 80 cm

Price excl. tax per day: 4,27 €

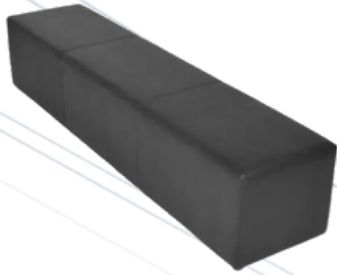
Collection «plus»



3-seater sofa

sizes : 197 x 68 x 73 cm

Price excl. tax per day: 213,80 €



Bench

Sizes: 200 x 45 x 42 cm

References : White or Black

Price excl. tax per day: 49,65 €



Lounge chair

Sizes : 67 x 48 cm

References : White or Black

Price excl. tax per day : 42,52€



Square Pouf

Sizes: 45 x 45 x 45 cm

References : White or Black

Price excl. tax per day: 16,15 €



Denver chair

Sizes : 47 x 52 x 77 cm

Price excl. tax per day: 2,36 €



velvet chair



Sizes: 42 x 51 x 83 cm

References : Black or Red

Price excl. tax per day: 3,86 €



Kasar Stool

Sizes: 49 x 51 x 105 cm
Price excl. tax per day: 20,77 €



Smile chair

Sizes: 44 x 50 x 81 cm
Price excl. tax per day: 5,52 €



Kubo Stool

Sizes : 35 x 35 x 79
References : black, grey, blue,
green, red.
Price excl. tax per day: 17,30 €



Atlanta Stool

Sizes: 32 x32
Price excl. tax per day: 20,76 €



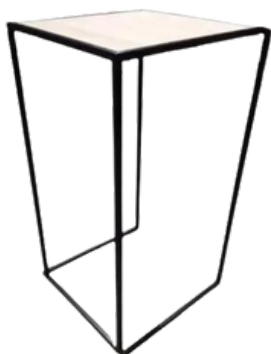
Kubo wood stool

Sizes : 35 x 35 x 79 cm
References : Black or red
Price excl. tax per day: 21,23 €



Mange debout conique

Sizes: 65 x 65 x 110 cm
References : Black or
White
Price excl. tax per
day : 50,64 €



Mange debout Chicago

Sizes : 55 x 60 x 108 cm
Reference : wooden tray
Price excl. tax per day:
20,53 €



Mange debout Kubo

Sizes : 70 x 70 x 110 cm
References : Black, White, brown Wood
Price excl. tax per day : 22,51 €





Mange debout Wall

Sizes: 120 x 35 x 110 cm
References : Wood or Black
Price excl. tax per day: 22,51 €



Chicago coffee table

Sizes: 60 x 60 x 40 cm
Price excl. tax per day: 25,37 €



Mange debout cover

Sizes : 105 x 75 cm
References : black, green, red, pink, blue, orange, yellow, cyan blue, grey
Price excl. tax per day: 26,91 €



Mange debout cover

Sizes : 105 x 75 cm
Reference : White
Price excl. tax per day : 32,29



Industrial barrel

Sizes : 90 x 60 cm
References : Blue, Black, Grey, Red
Price excl. tax per day: 20,76 €



Barrel

Price excl. tax per day : 16,87



Round coffee table

Sizes : 75 x 40 cm
Price excl. tax per day: 15,61



High dinner table

Sizes : 230 x 80 x 110 cm
Price excl. tax per day: 57,73 €



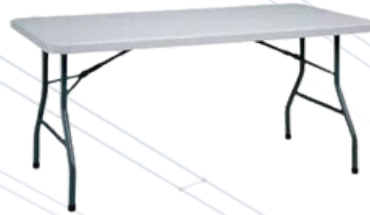
Rectangle Table

Sizes : 120 x 60 cm
Price excl. tax per day: 11,20 €



Rectangle Table

Sizes : 152 x 76 cm
Price excl. tax per day : 8,95 €



Rectangle Table

Sizes : 183 x 76 cm
Price excl. tax per day: 9,93 €



Industrial hostess counter

Sizes : 100 x 50 x 105 cm
Price excl. tax per day: 105 €



105 Litre fridge

Specifications : 105 L – Sodaglass
Price excl. tax per day: 57,79 €



Draft shield

Sizes : 3 pants of 60 x 183 cm
Specifications : Black
Price excl. tax per day : 44,97 €



Coat rack

Sizes: 1,78 m
Price excl. tax per day: 14,40 €

Plants

Golden Bamboo



Sizes : 180 cm

Price excl. tax per day : 68 €

Ficus Benjamina



Sizes : 160 cm

Price excl. tax per day: 56 €

Kentia



Sizes : 180 cm

Price excl. tax per day: 76 €



Double **Nixte**

For further information, please contact the Double Mixte
Projects Department:

service-exposants@doublemixte.com

Before November 8th 2023